

TIGER TOPS KARNALI LODGE AND TENTED CAMP GENERAL INFORMATION

The Tiger Tops Karnali Lodge and Tented Camp is situated within the Royal Bardia Wildlife Reserve in remote far West Nepal. Accessible by a rough though interesting four and half hour drive through lush sal forests and spectacular Tharu Villages with chances of viewing wildlife. The flight from Kathmandu to Nepalgunj offers breathtaking views of the Himalaya.

WHEN TO COME

The season at Karnali is from mid October through to the end of April.

CLIMATE

November - February

The days are pleasant whilst the mornings and evenings are cool.

February - April

The days become hot [70°-80°F], however, by evening it cools down again. This is the best time for wildlife viewing.

WHAT TO WEAR

Attire at the Lodge and Tented Camp is completely casual. Jungle colours such as beige, brown, khaki and green are most appropriate. Comfortable clothing is recommended. A swim suit is handy during the summer months. Warm clothes [sweater and jacket] are recommended for winter months for use in the mornings and evenings. During the day, however, long trousers or shorts and t-shirts are adequate. A wind breaker is useful since the mornings can be quite windy.

Hats, sunglasses and sun cream are essential, especially on the river.

Good, comfortable walking shoes are recommended and these should be of the kind you will not mind getting wet. Track shoes are ideal.

TIGER TOPS KARNALI LODGE AND TENTED CAMP

P. O. BOX 242/DURBAR MARG
KATHMANDU/NEPAL

TEL: 222706, 226173
TLX: 2216 TIGTOP NP
CBL: TIGERTOPS
FAX: [977] 221379

WHAT TO BRING

1. Binoculars would add greatly to your enjoyment at Karnali for birdwatching and wildlife viewing.
2. Personal medical requirements.
3. Insect repellent.
4. We suggest that guests travel light bringing only one small suitcase or duffel bag.

ARRIVAL AT NEPALGUNJ AND DRIVE TO THE LODGE AND TENTED CAMP

On arrival at Nepalgunj airport you will be met by our representative who will assist you with your baggage. Then you will depart by landrover or jeeps for Karnali Lodge or Tented Camp. The drive although long and rough, is extremely interesting.

From February to April, the roads can be dusty and a handkerchief or scarf can be useful. A polythene bag will come in handy for carrying camera equipment.

IMPORTANT POINTS TO REMEMBER WHEN AT KARNALI

1. We do our best to maintain the natural environment at Karnali. There is no electricity, and lighting is with lanterns. An ingenious heating system provides hot water for showers. Guests interested in photography using flashes, video cameras and the like, should ensure that they bring an adequate supply of charged batteries and their full quota of film rolls required from Kathmandu.
2. To ensure the safety of clients at Karnali, guests are always accompanied by our trained, resident naturalists. However, while we endeavour to do everything possible in this regard, guests should bear in mind that they participate in all activities at their own risk. We take no responsibility for personal injury of any kind or loss of personal effects.

We look forward to having you with us.

Tiger Tops Jungle Lodge and Tented Camp



Tiger Tops Jungle Lodge is situated 75 air miles south west of Kathmandu in the Royal Chitwan National Park, one of Asia's richest and most spectacular wildlife sanctuaries. For centuries Nepal was veiled in mystery, a remote exotic Kingdom shut away from the outside world. Completely forbidden to strangers were its massive mountains, green terraced foothills and tall grass jungles. Now you can experience adventure in the Himalayan foothills and jungles.

In this panoramic jungle setting Tiger Mountain operates three distinct vacation facilities: Tiger Tops Jungle Lodge, Tiger Tops Tented Camp and the Tharu Village.

Tiger Tops Jungle Lodge our tree top hotel lies deep in the heart of Royal Chitwan National Park. The Lodge's tree houses and bungalows are built with materials taken from the forest itself. All the double rooms are attractively furnished and each room has a solar heated private shower and modern toilet amenities. The Nepalese style dining, lounge and bar area, with its huge domed roof and central open hearth will be your special place for relaxation. Delicious Nepalese and continental cuisine is served and a fully stocked bar is open until the last guest goes to bed.

Activities at the Lodge include nature walks, wildlife viewing on elephant back, landrover drives, boat trips, jungle treks, birdwatching excursions, wildlife viewing and photographing from machans (blinds), fishing (in season) and slide shows and the services of experienced naturalists. We invite you to spend at least two or three nights with us at the Lodge.

The wildlife of Chitwan includes the rare Great One Horned rhino, several species of deer, sloth bear, wild boar, fresh water dolphin, leopard, crocodile, over 450 species of exotic birds and the elusive Royal Bengal tiger.

Situated on the Bandarijola Island, the Tiger Tops Tented Camp is simple but comfortable. Accommodation is in twin bedded, African style safari tents with separate showers and toilets. Meals are served around the campfire under a thatched dome overlooking the river.

Boat trips to the river confluence, picnics, one-day hikes, nature walks (always accompanied by a staff naturalist) are all part of the camp's programme. In the evenings, a machan affords another opportunity to glimpse the tiger.

Tiger Tops Jungle Lodge and Tented Camp are best visited in combination with the Tharu Village, built in the style of a traditional Tharu longhouse. A stay at the Tharu Village offers a chance to see the culture and life style of the Tharus, the people of the Terai.

WHAT TO BRING

1. Binoculars would add greatly to your enjoyment at the Lodge for bird and game viewing.
2. Neutral coloured clothing is recommended for a visit to the jungle. Light clothing is needed for the daytime with a sweater and jacket for the evenings from November to March.
3. Insect repellent and personal medical requirements should be carried.
4. We suggest the guests travel light bringing only one small suitcase or duffle bag.

HOW TO GET THERE

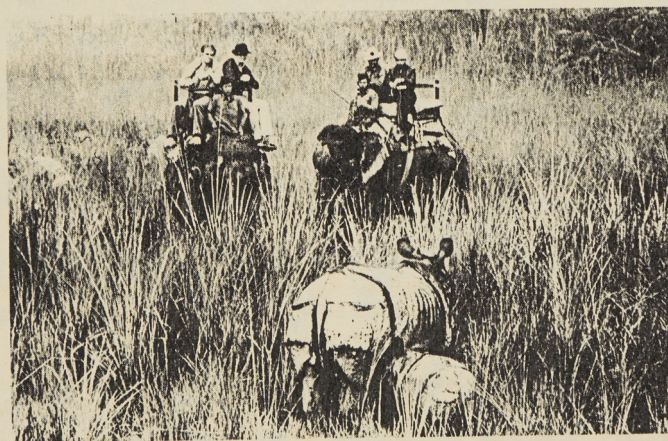
The fastest way is to take the daily 30 minutes flight of Royal Nepal Airlines using Avro, Twin Otter or Pilatus Porter. The flight lands guests at Meghauli airstrip in the Chitwan Valley. The round trip airfare is US\$ 130.00 per person. This is subject to change without notice. In the event of flight cancellations due to unfavourable weather conditions, Tiger Tops or your local agent will make the necessary arrangements for guests to travel by road.

An exciting option is to travel to Tiger Tops via a leisurely three-day river trip on modern rubber rafts rowed by skilled and internationally trained boatmen of Himalayan River Exploration, part of the Tiger Mountain Group. The first day is a thrilling introduction to whitewater followed by two days of scenic floating through the gorges of the middle hills into the Terai plains. The route follows the Kathmandu - Pokhara highway. Camps are set upon beautiful, sandy beaches along the Trisuli and Seti rivers.

For those who prefer to travel overland, Tiger Tops is accessible from Kathmandu by road, a pleasant 5 1/2 hours drive through the middle hills into Chitwan Valley.

HOW TO BOOK

Tiger Tops is represented worldwide by leading adventure travel agents. Please contact yours for complete information or write to us direct at P. O. Box 242, Kathmandu, Nepal.
Tel: 222706, Telex: 2216 TIGTOP NP.



Tiger Tops is in marketing association with the Tiger Tops Mountain Travel group of companies under the registered trademark of *Tiger Mountain*